

PRODUCT INFORMATION PACKET



Model No: C6K34DK25A

Catalog No: E116771.00

E116771.00..2HP..3450RPM.56C.ODP.115/230V.1PH.60HZ.CONT.40C.1.15SF.RIGID C
FACE.C6K34DK25.....GENERAL PURPOSE.NONE.....

Open Drip Proof (ODP)



Regal and Leeson are trademarks of Regal Beloit Corporation or one of its affiliated companies.

©2018 Regal Beloit Corporation, All Rights Reserved. MC017097E



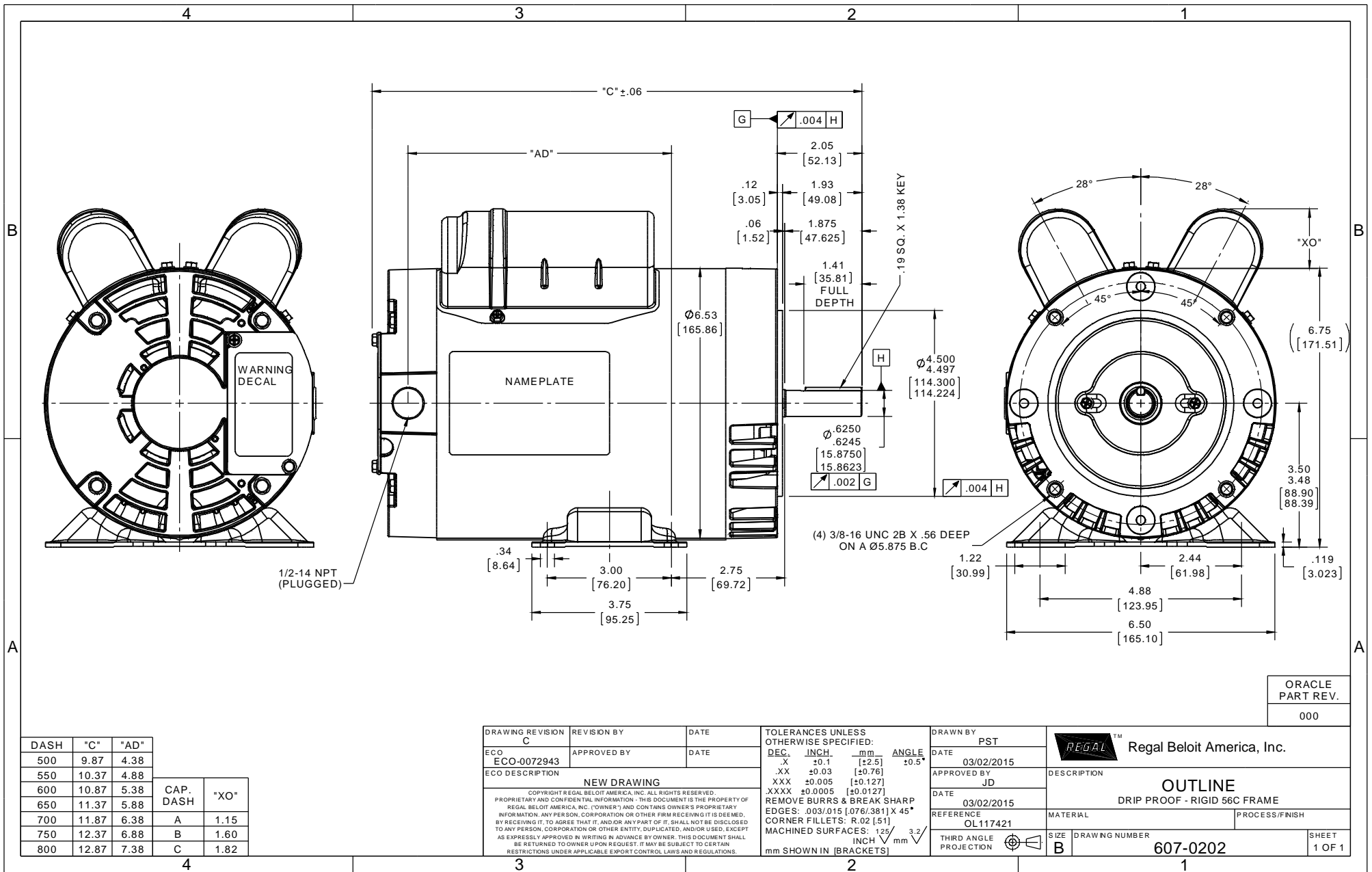


Nameplate Specifications

Output HP	2 Hp	Output KW	1.5 kW
Frequency	60 Hz	Voltage	115/230 V
Current	16.0/8.0 A	Speed	3450 rpm
Service Factor	1.15	Phase	1
Efficiency	82.9 %	Duty	Continuous
Insulation Class	F	Design Code	L
KVA Code	H	Frame	56C
Enclosure	Drip Proof	Overload Protector	No
Ambient Temperature	40 °C	Drive End Bearing Size	6203
Opp Drive End Bearing Size	6203	UL	Recognized
CSA	Y	CE	Y
IP Code	22		

Technical Specifications

Electrical Type	Capacitor Start Capacitor Run	Starting Method	Across The Line
Poles	2	Rotation	Selective Counterclockwise
Mounting	Rigid base	Motor Orientation	HORIZONTAL
Drive End Bearing	BALL	Opp Drive End Bearing	BALL
Frame Material	Rolled Steel	Shaft Type	NEMA 56
Overall Length	11.87 in	Frame Length	7.00 in
Shaft Diameter	0.625 in	Shaft Extension	1.88 in
Assembly/Box Mounting	F1 ONLY		
Outline Drawing	607-0202-700B	Connection Diagram	005054.01



DASH	"C"	"AD"	CAP. DASH	"XO"
500	9.87	4.38		
550	10.37	4.88		
600	10.87	5.38		
650	11.37	5.88	A	1.15
700	11.87	6.38	B	1.60
750	12.37	6.88		
800	12.87	7.38	C	1.82

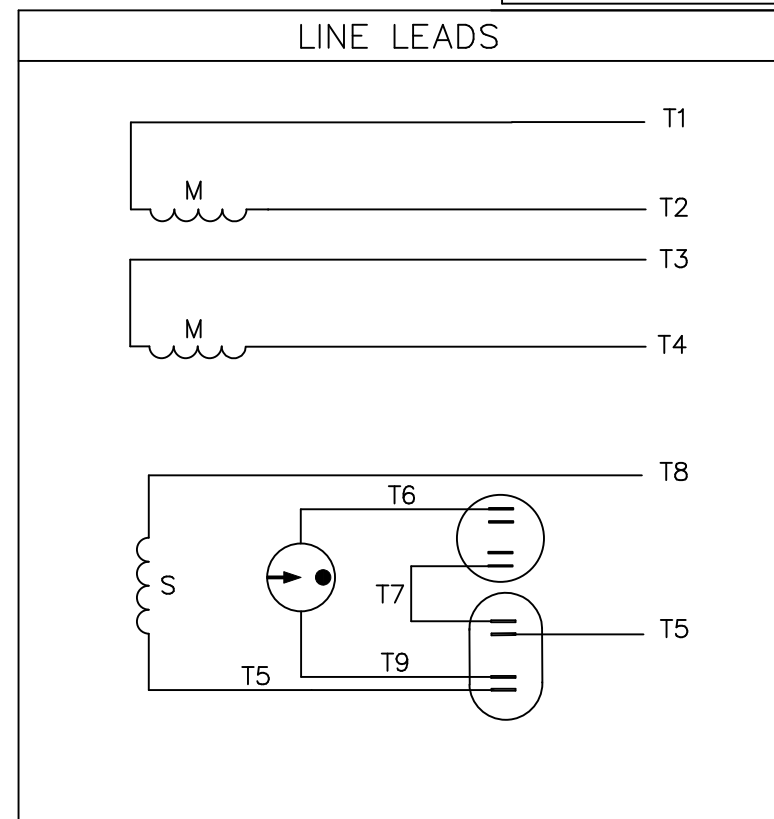
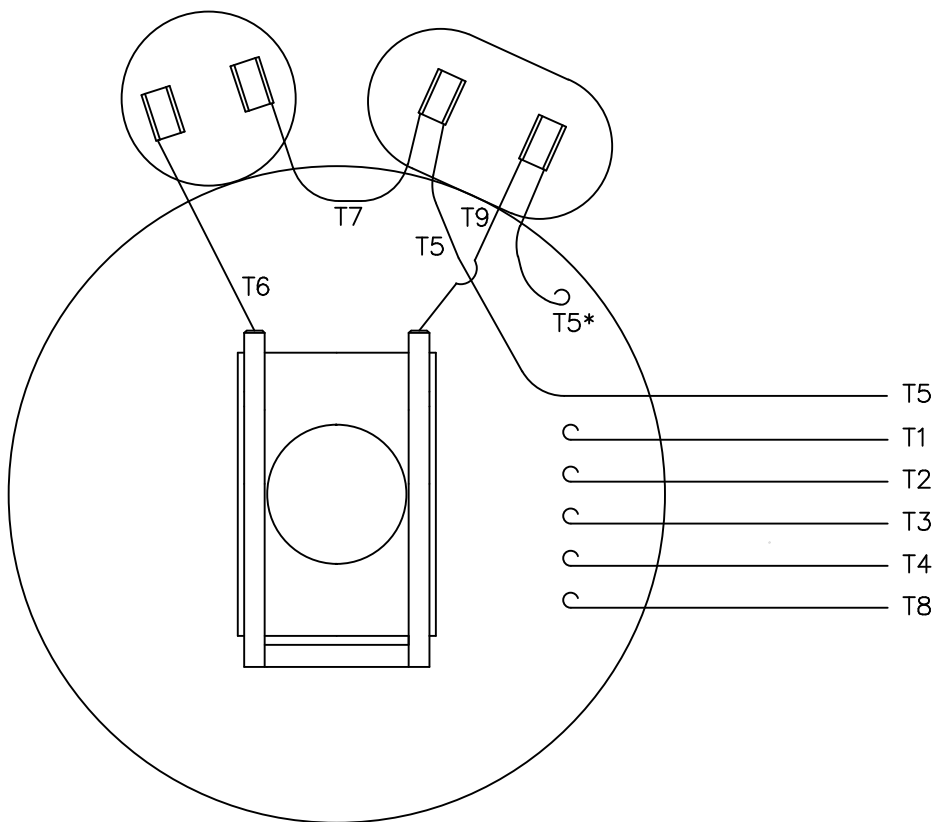
DRAWING REVISION	REVISION BY	DATE
C		
ECCO	APPROVED BY	DATE
ECCO-0072943		
ECCO DESCRIPTION		
NEW DRAWING		
<small>COPYRIGHT REGAL BELOIT AMERICA, INC. ALL RIGHTS RESERVED. PROPRIETARY AND CONFIDENTIAL INFORMATION. THIS DOCUMENT IS THE PROPERTY OF REGAL BELOIT AMERICA, INC. (OWNER) AND CONTAINS OWNER'S PROPRIETARY INFORMATION. ANY PERSON, CORPORATION OR OTHER FIRM RECEIVING IT IS DEEMED, BY RECEIVING IT, TO AGREE THAT IT, AND/OR ANY PART OF IT, SHALL NOT BE DISCLOSED TO ANY PERSON, CORPORATION OR OTHER ENTITY, DUPLICATED, AND/OR USED, EXCEPT AS EXPRESSLY APPROVED IN WRITING IN ADVANCE BY OWNER. THIS DOCUMENT SHALL BE RETURNED TO OWNER UPON REQUEST. IT MAY BE SUBJECT TO CERTAIN RESTRICTIONS UNDER APPLICABLE EXPORT CONTROL LAWS AND REGULATIONS.</small>		

TOLERANCES UNLESS OTHERWISE SPECIFIED:		
DEC.	INCH.	mm ANGLE
.X	±0.1	[±2.5] ±0.5°
.XX	±0.03	[±0.76]
.XXX	±0.005	[±0.127]
.XXXX	±0.0005	[±0.0127]
REMOVE BURRS & BREAK SHARP EDGES: .003/.015 [0.076/.381] X 45°		
CORNER FILLETS: R.02 [.51]		
MACHINED SURFACES: 125 INCH mm 3.2		
mm SHOWN IN [BRACKETS]		

DRAWN BY		DATE		DESCRIPTION	
PST		03/02/2015		OUTLINE DRIP PROOF - RIGID 56C FRAME	
APPROVED BY		DATE		MATERIAL	
JD		03/02/2015			
REFERENCE		PROCESS/FINISH		SIZE	
OL117421				DRAWING NUMBER	
THIRD ANGLE PROJECTION				607-0202	
				SHEET 1 OF 1	


ORACLE PART REV. 000

VIEW FROM OUTSIDE OF MOTOR AT SWITCH END.



	ROTATION FACING LEAD END	L1	L2	JOIN
HIGH VOLT	C.C.W.	T1	T4 T5	T2,T3 T8
	C.W.	T1	T4 T8	T2,T3 T5
LOW VOLT	C.C.W.	T1 T3,T8	T2,T4 T5	
	C.W.	T1,T3 T5	T2,T4 T8	

* THIS LEAD MAY BE WHITE

				TOLERANCES UNLESS SPECIFIED		 ELECTRIC MOTORS GEARMOTORS AND DRIVES	DRAWN JRW 09/27/74		
				DEC.	INCHES		CHK TEM		
				.X	±.1		APPD 10/11/74		
11	ALTERNATE T5 LEAD MARKING WAS RED	RLW	8/6/02	.XX	±.01	TITLE EXT. WIRING DIAGRAM TYPE "K" W/O PROTECTOR MAT'L. DECAL-004012 FINISH	SCALE	1=1	
10	ADDED ALTERNATE T5 LEAD MARKING	RLW	6/5/02	KH	.XXX ±.005		REF	A-005053	
09	REDRAWN TO CAD	DBT	05/28/97		.XXXX ±.0005		FMF	W-K6343	
NO.	REVISION	BY & DATE	CHK	ANG	±1/2"		PREV		
THIS DRAWING IN DESIGN AND DETAIL IS OUR PROPERTY AND MUST NOT BE USED EXCEPT IN CONNECTION WITH OUR WORK ALL RIGHTS OF DESIGN AND INVENTION ARE RESERVED THIS IS AN ELECTRONICALLY GENERATED DOCUMENT - DO NOT SCALE THIS PRINT				RFP	CAD FILE	00505401	SIZE	DRAWING NO.	REV.
				DIST	BRF-NLV		A	005054-01	11



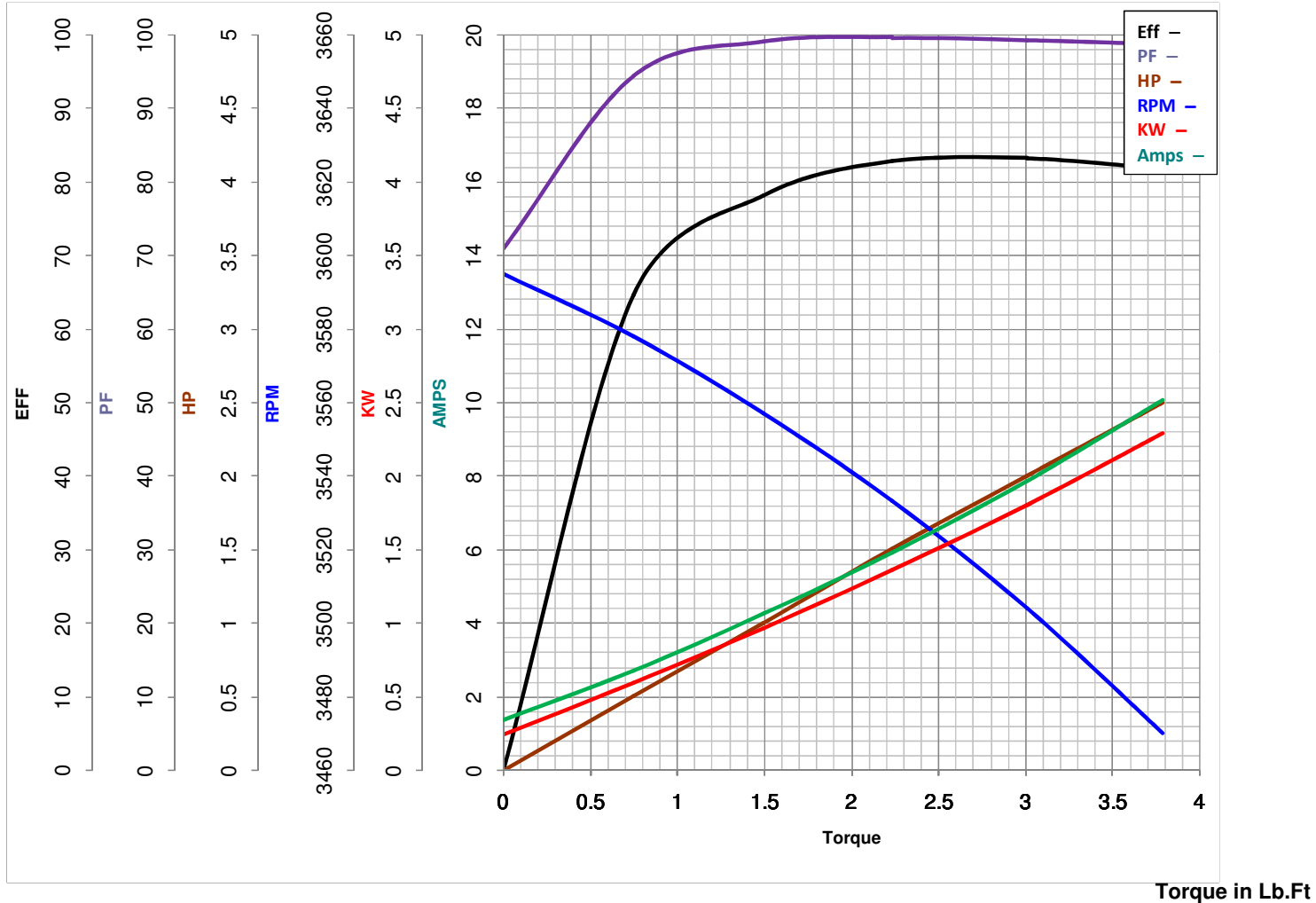
LEESON ELECTRIC CORPORATION
TYPICAL PERFORMANCE CURVE for AC MOTOR

Model No E116771.00

Catalog No E116771.00

Curve at 230 Volts HP 2.00 PHASE 1
60 HZ
2 HP VOLTS 115/230

HZ 60 RPM 3450



FL TORQUE	<u>3.009</u> Lb.Ft	FL AMPS	<u>16/8</u>
BD TORQUE	<u>6.6</u> Lb.Ft	PU TORQUE	<u>5.8</u> Lb.Ft
LR TORQUE	<u>6.811</u> Lb.Ft	LR AMPS	<u>57.6</u>
WINDING	K632186-3	Date	<u>7/17/2018</u>